



Fig. 5.4 • Asymmetrically shaped Bronze Age “knife” from trial trench 4 (DSP07-H08-01) seen from two sides. The bifacial working of the edges is clearly visible.



Fig. 5.5 • Fragment (cutting edge) of a battle-axe with a cylindrical perforation from DSP07-H08-01. Bronze Age.

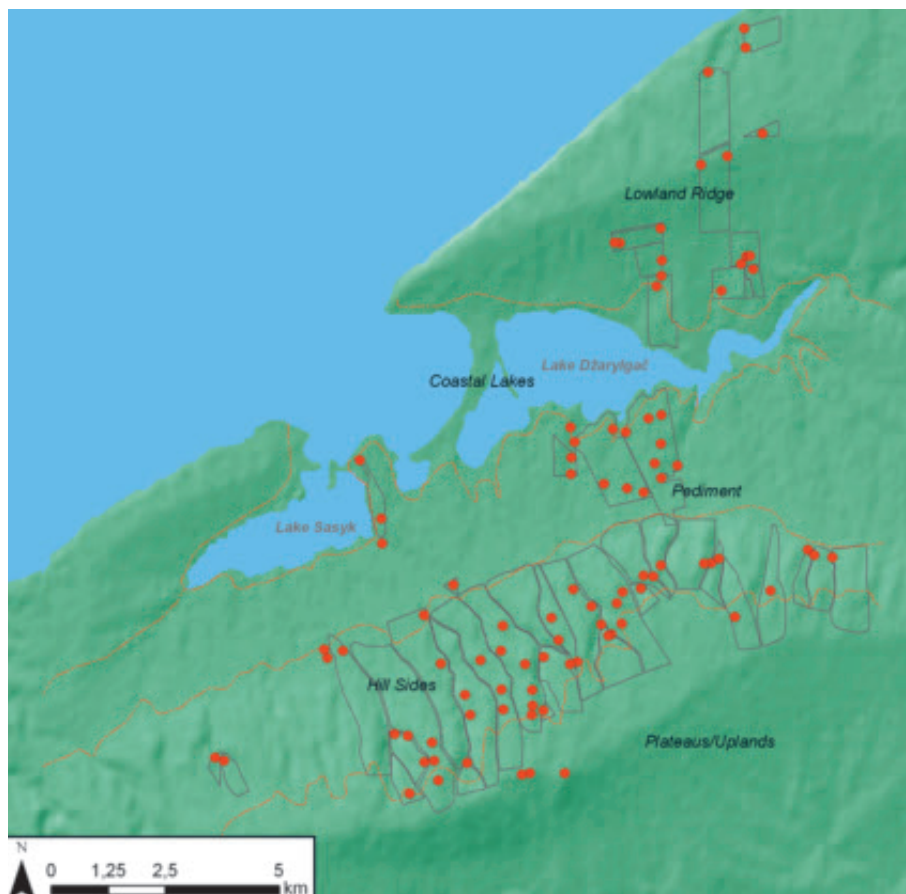


Fig. 6.1 • Landscape types, surveyed fields and hills and sites found.

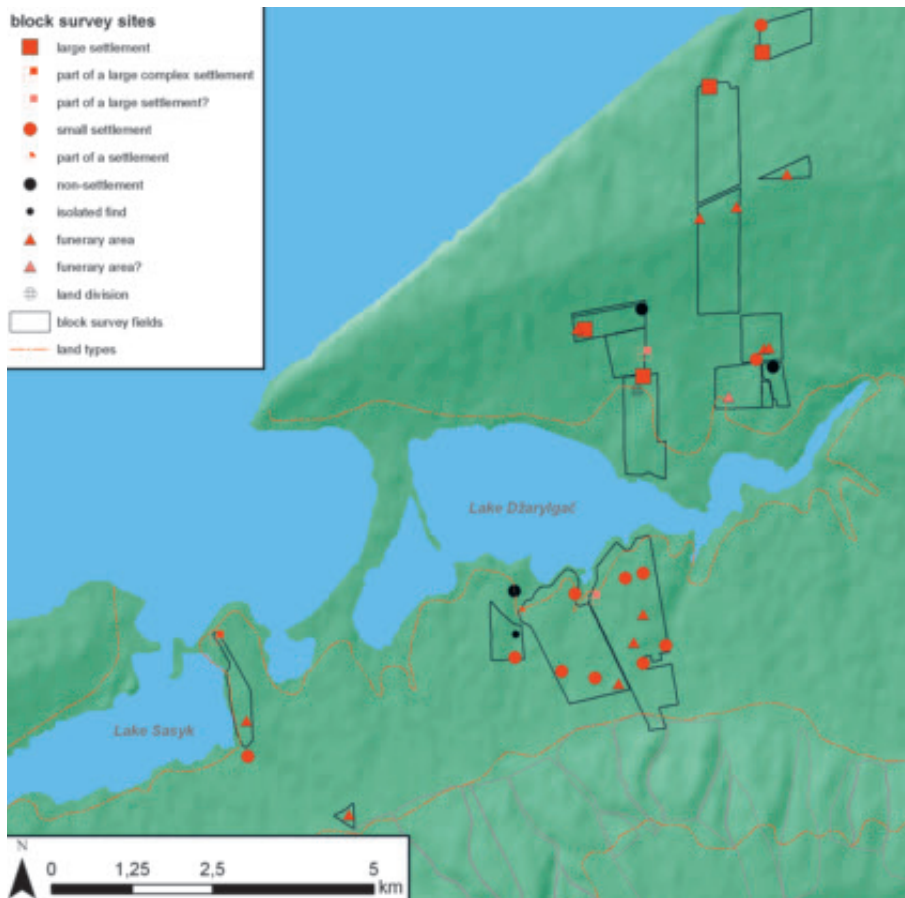


Fig. 6.2 • Map showing the distribution of the various classes over the low-lying areas.

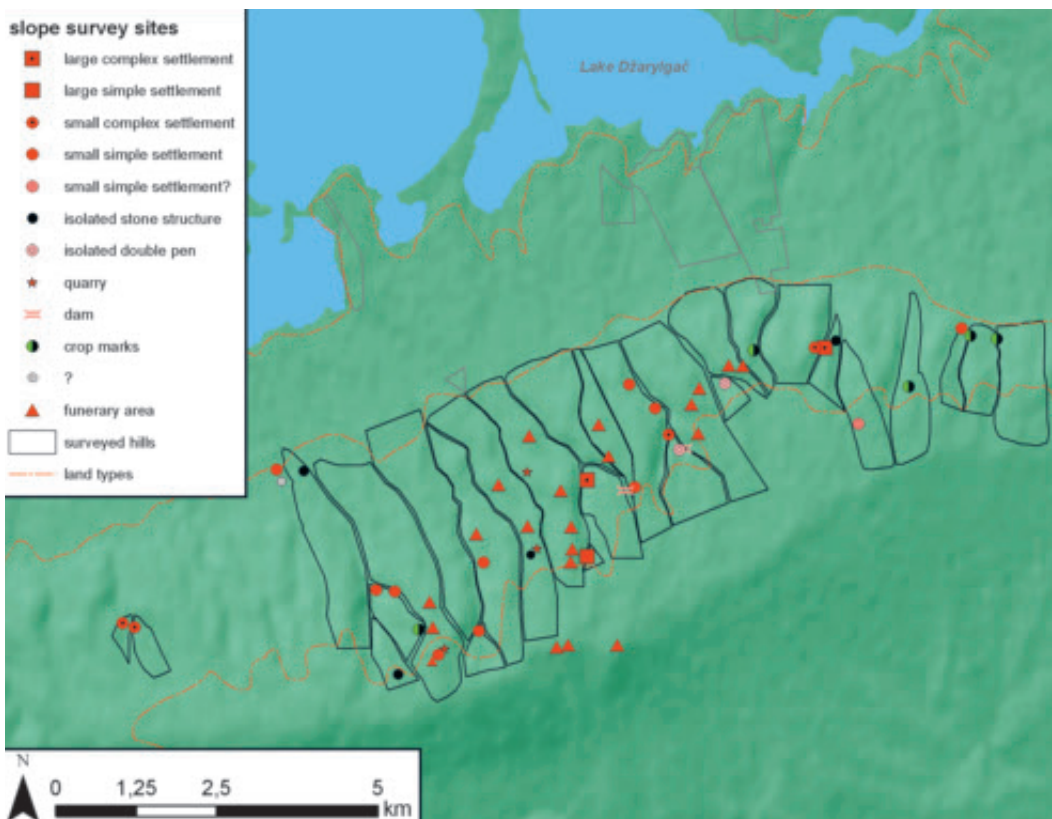


Fig. 6.3 • Map showing the distribution of the various classes over the higher parts.

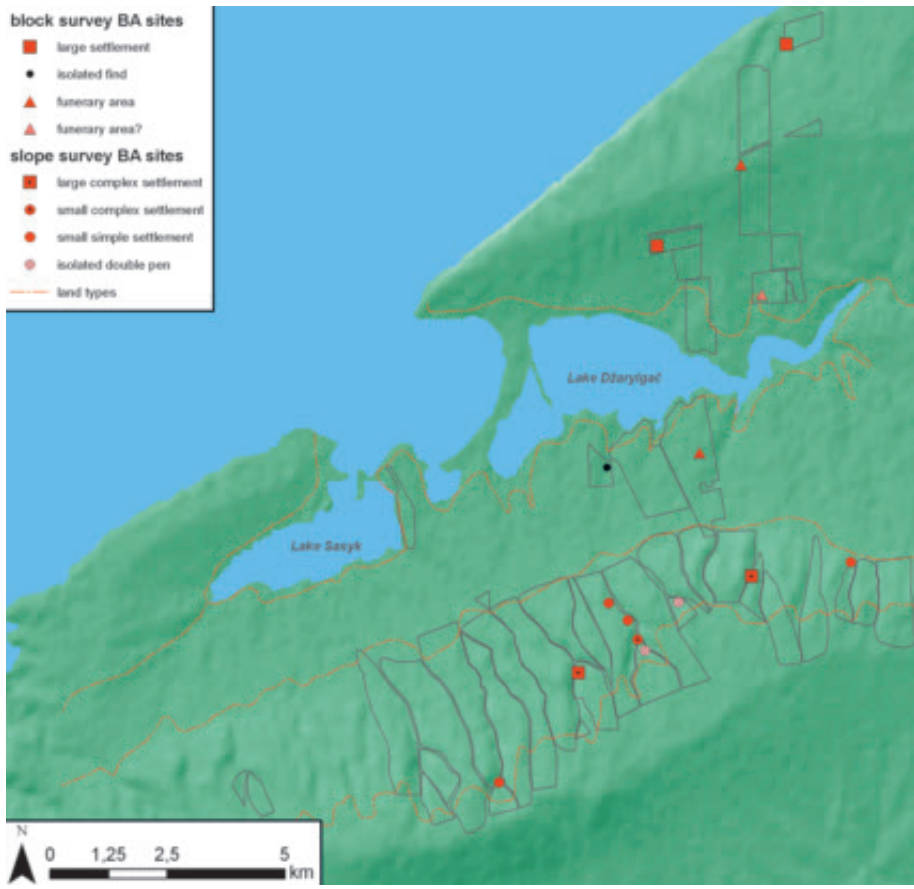


Fig. 6.4 • Bronze Age sites of the DSP transect.

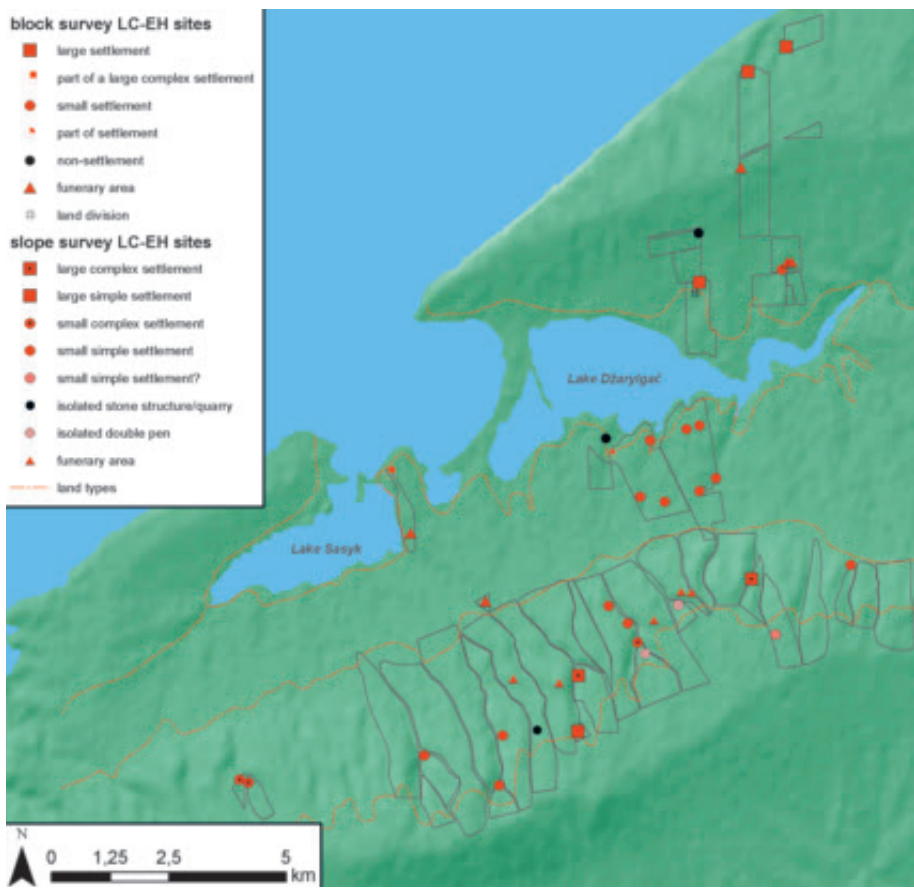


Fig. 6.5 • Late Classical/Early Hellenistic sites of the DSP transect.

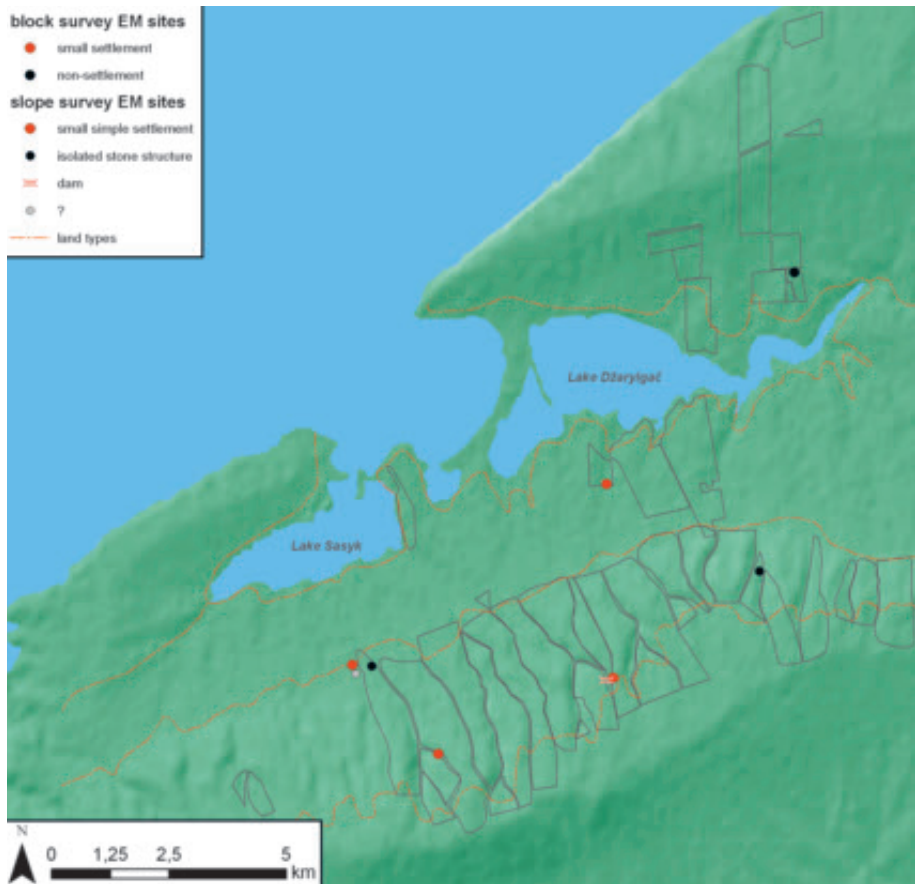


Fig. 6.6 • Medieval and Early Modern sites of the DSP transect.

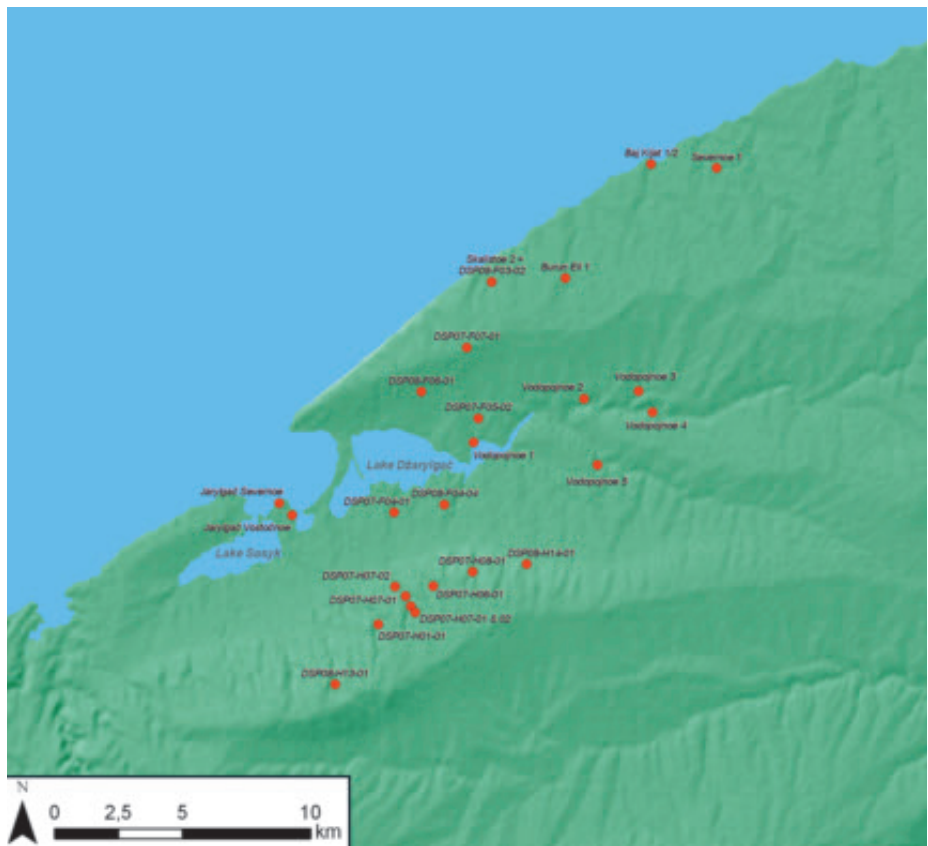


Fig. 6.7 • Prehistory: previously known sites and sites located by DSP between Černomorskoe and Masliny.

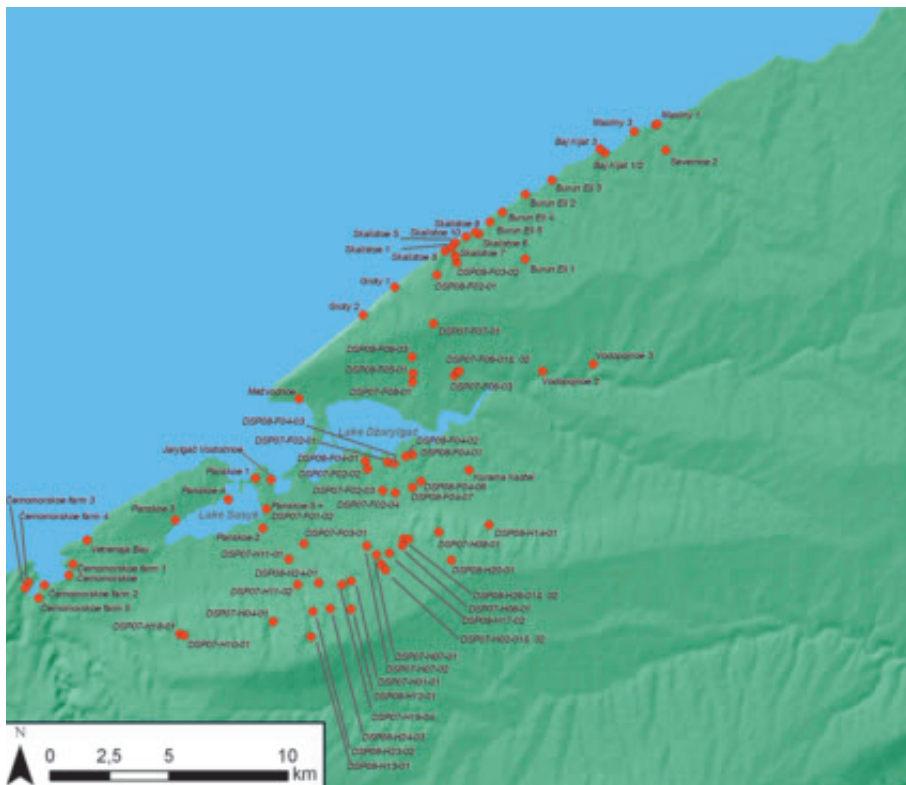


Fig. 6.8 • Greco-Roman period: previously known sites and sites located by DSP between Černomorskoe and Masliny.



Fig. 6.9 • Kurgan at Snežnoe functioning as present-day graveyard.



Fig. 6.10 • Post-Antique period: previously known sites and sites located by DSP between Černomorskoe and Masliny.



Fig. 6.11 • The Early Modern settlements of Kipčak Učkiju and Kurama Kostel' can easily be distinguished from satellite images due to the presence of ashy soils and building remains (Google Earth).



Fig. 6.12 • Tarchankut, cadastral system reconstructed on the basis of tracks on the half-verst map unrelated to contemporary settlement structure.

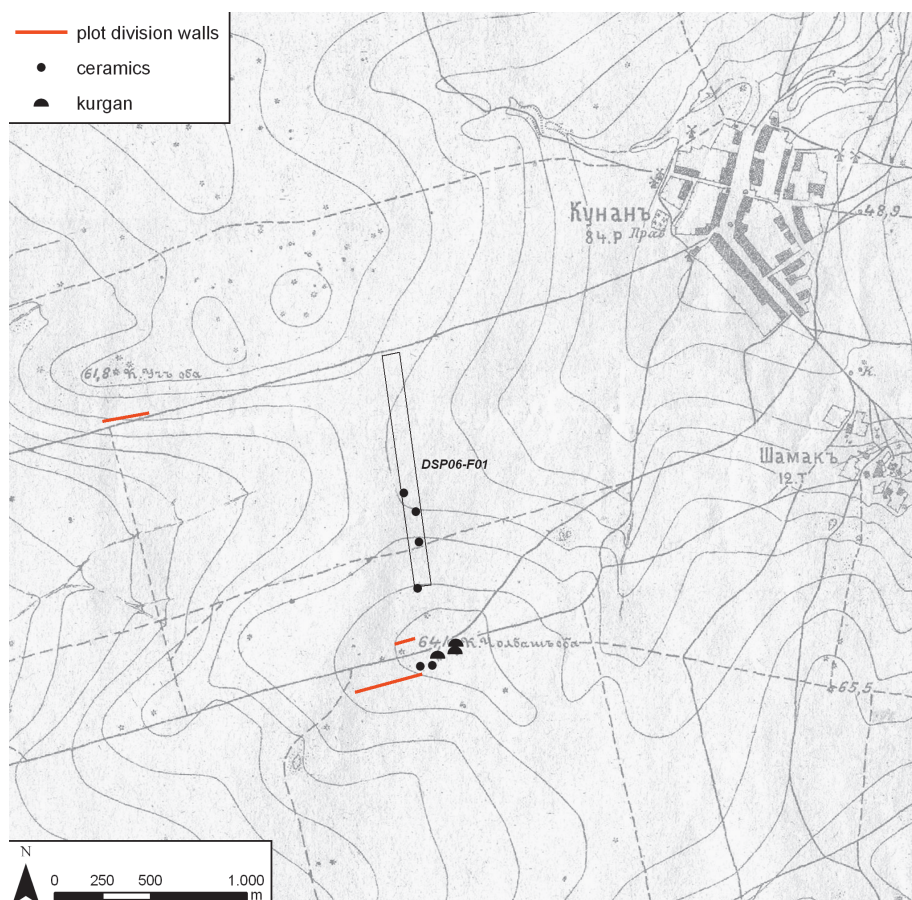


Fig. 6.13 • Plot divisions, western Tarchankut.



Fig. 6.14 • Southernmost plot division wall in form of straight soil bank from west towards east.



Fig. 6.15 • Dry stone plot division wall east of the Karadža Settlement.





Fig. 6.16 • Area between the Černomorskoe Settlement and the Vetrenaja farmhouse with indication of plot lines (Google Earth).

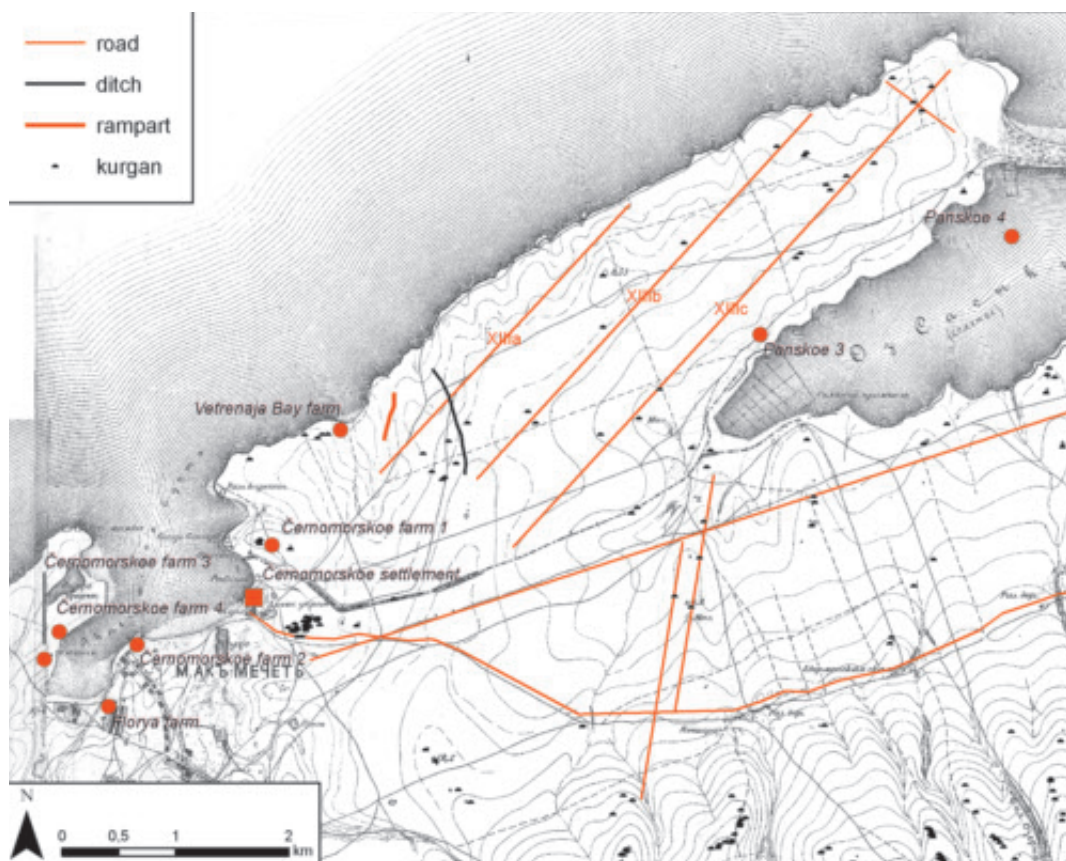


Fig. 6.17 • Sasyk promontory.

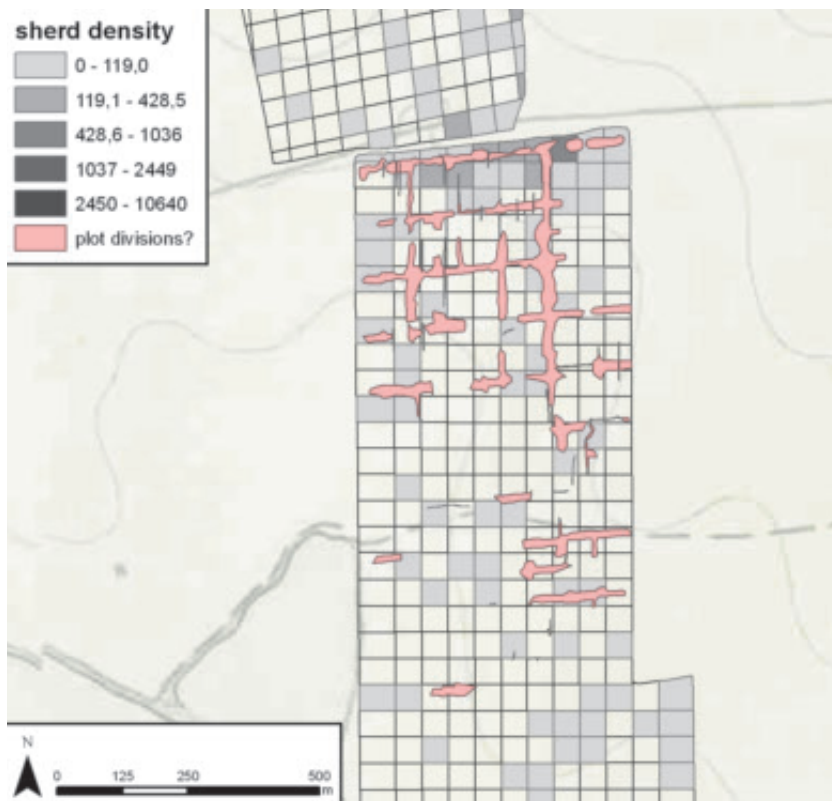


Fig. 6.18 • Field DSP-07-08, plot divisions?

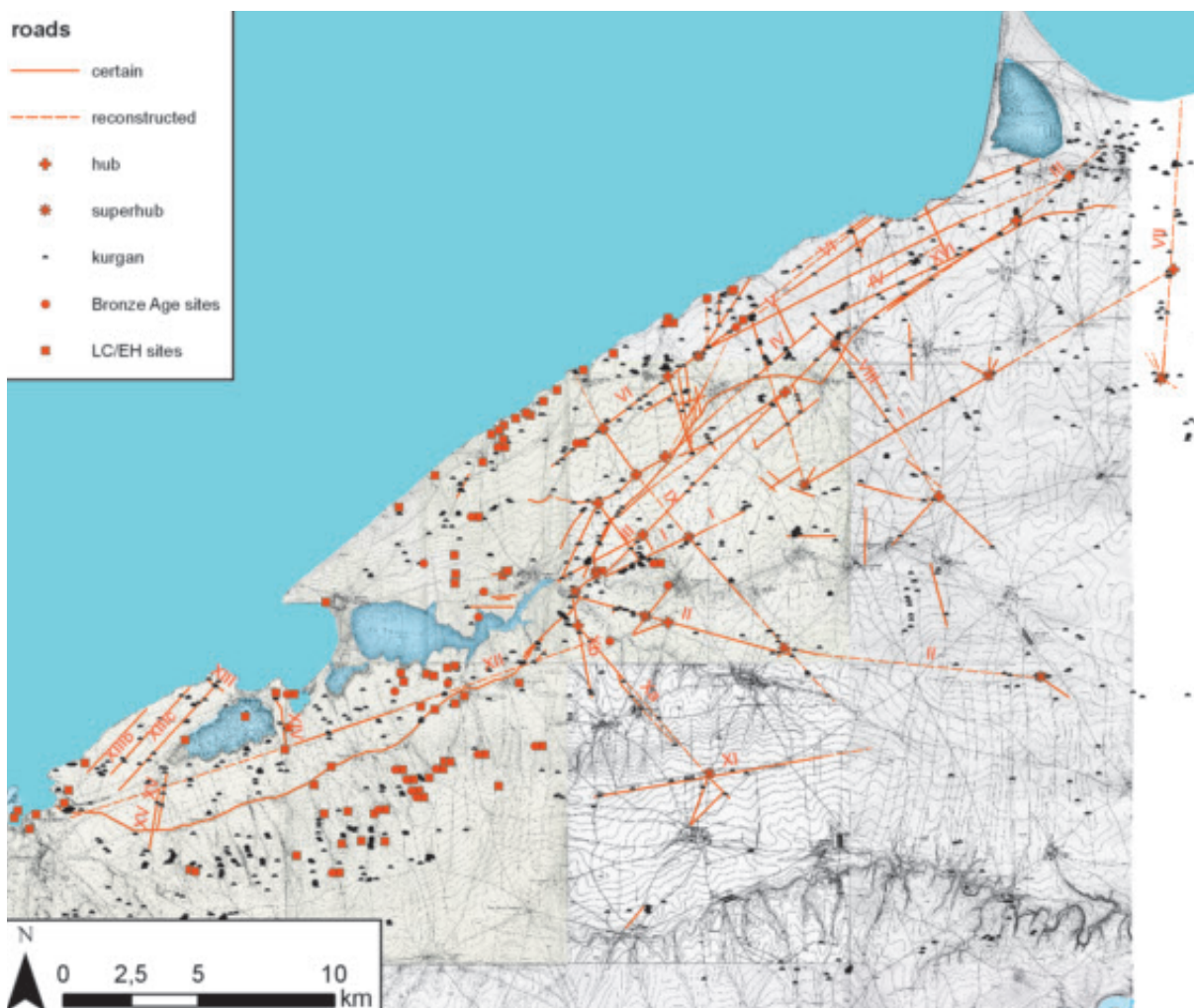


Fig. 6.19 • Overall map with key to roads.

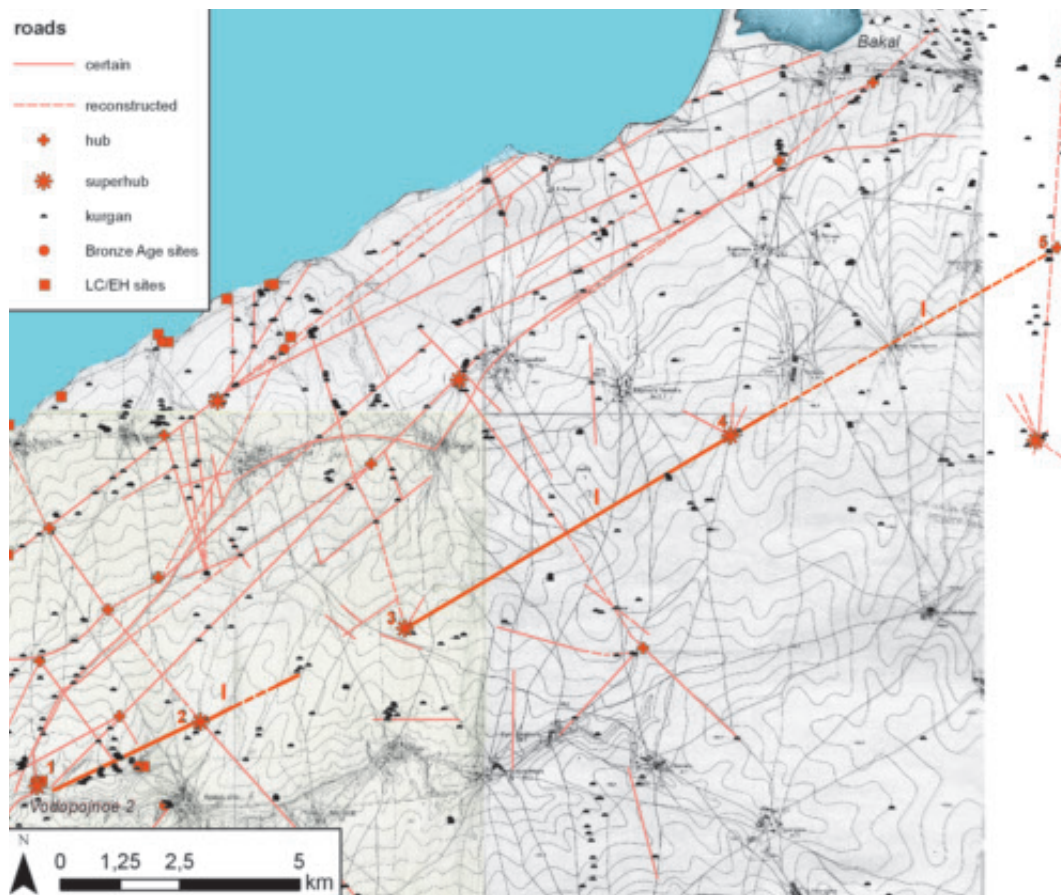


Fig. 6.20 • Road I.



Fig. 6.21 • Superhub I.1/III.1 (Google Earth).

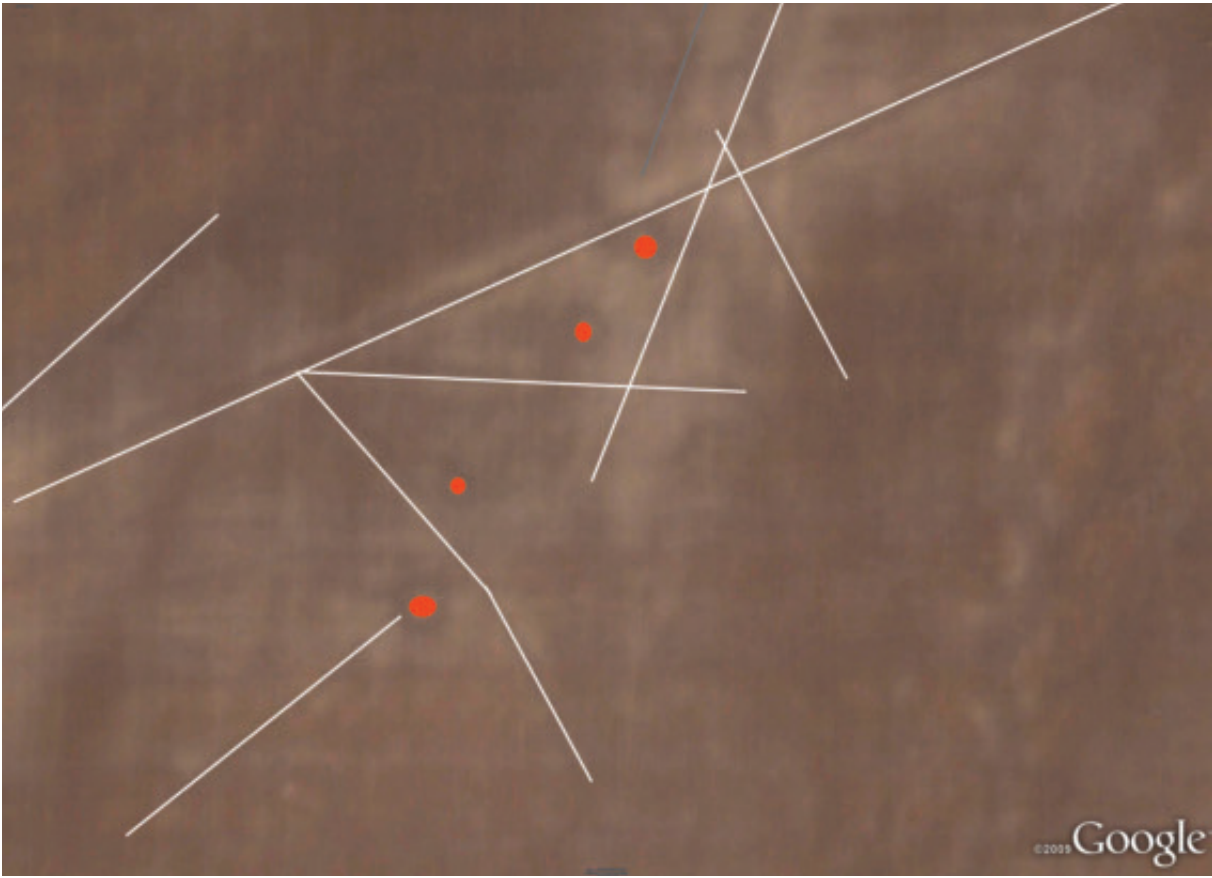


Fig. 6.22 • Superhub I.2/IX.3 (Google Earth).



Fig. 6.23 • Superhub I.4 (Google Earth).

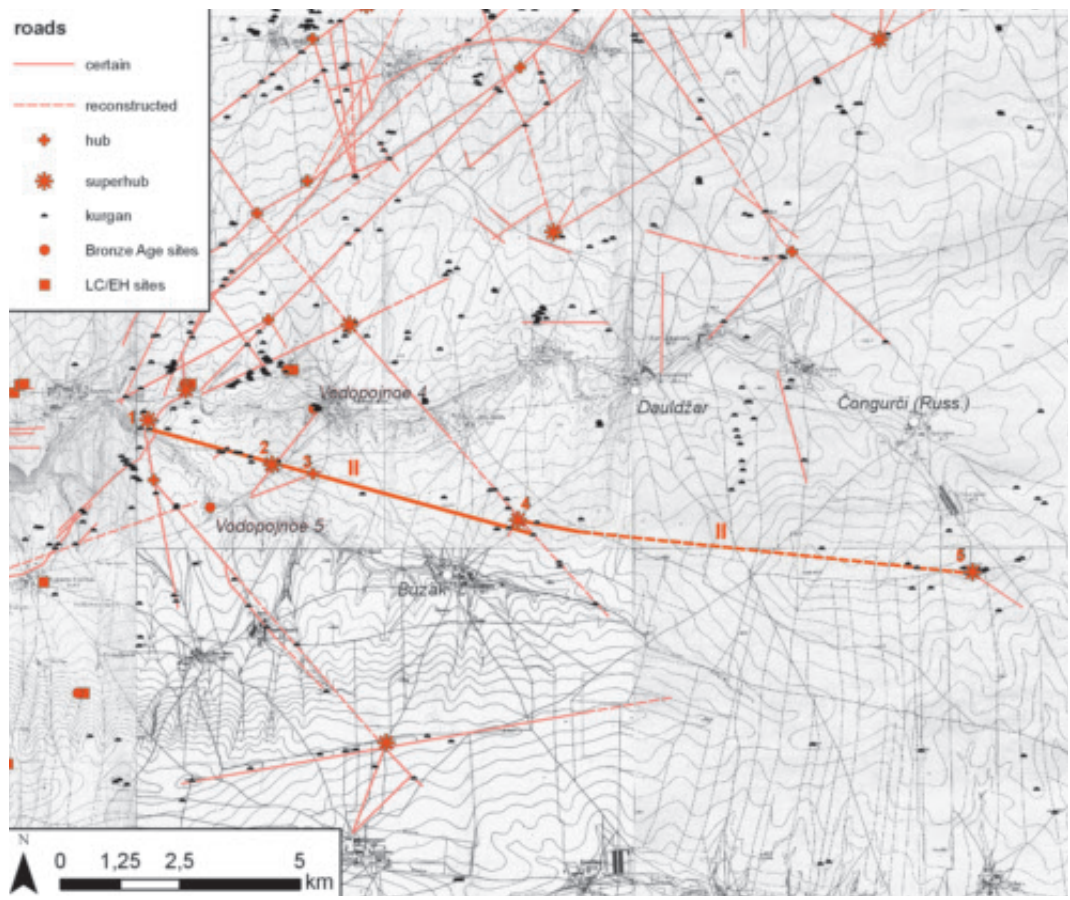


Fig. 6.24 • Road II.

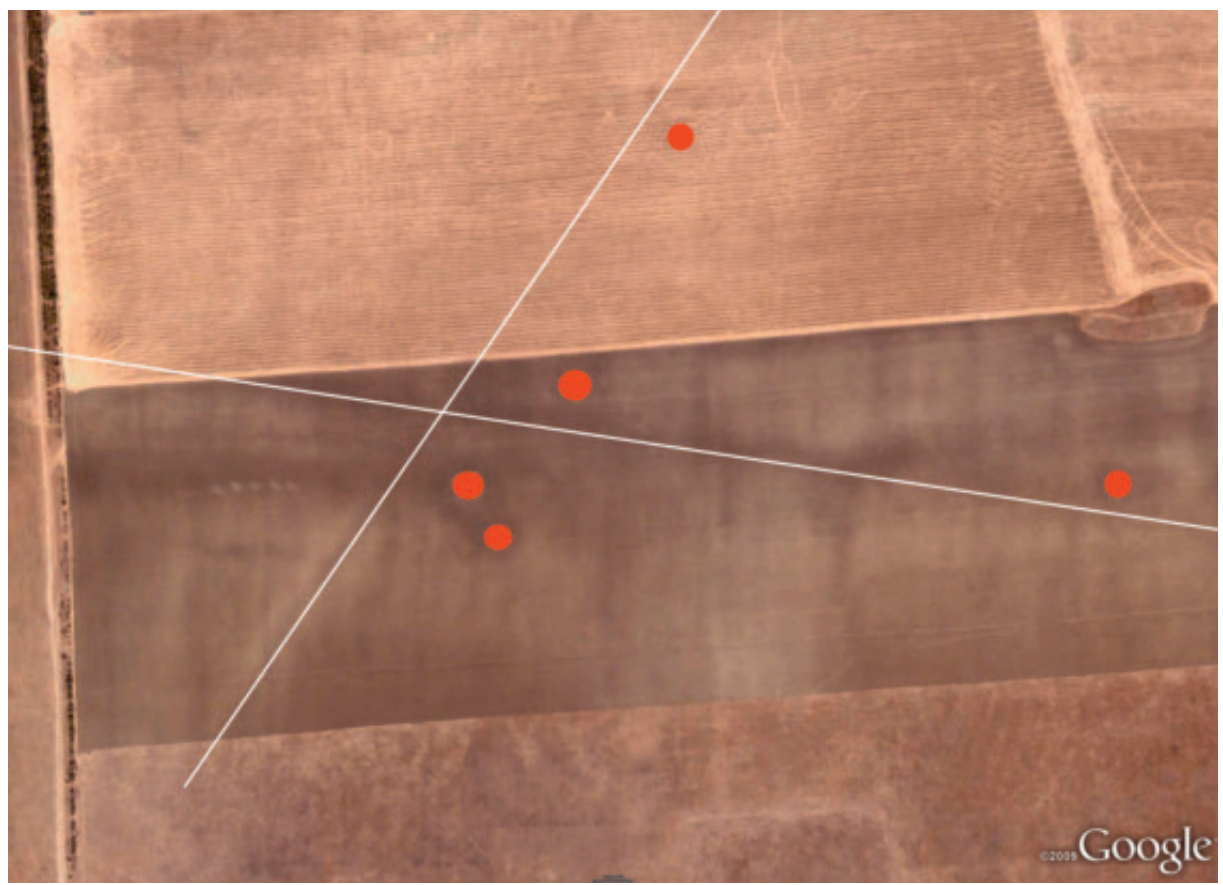


Fig. 6.25 • Superhub II.4/IX.4 (Google Earth).

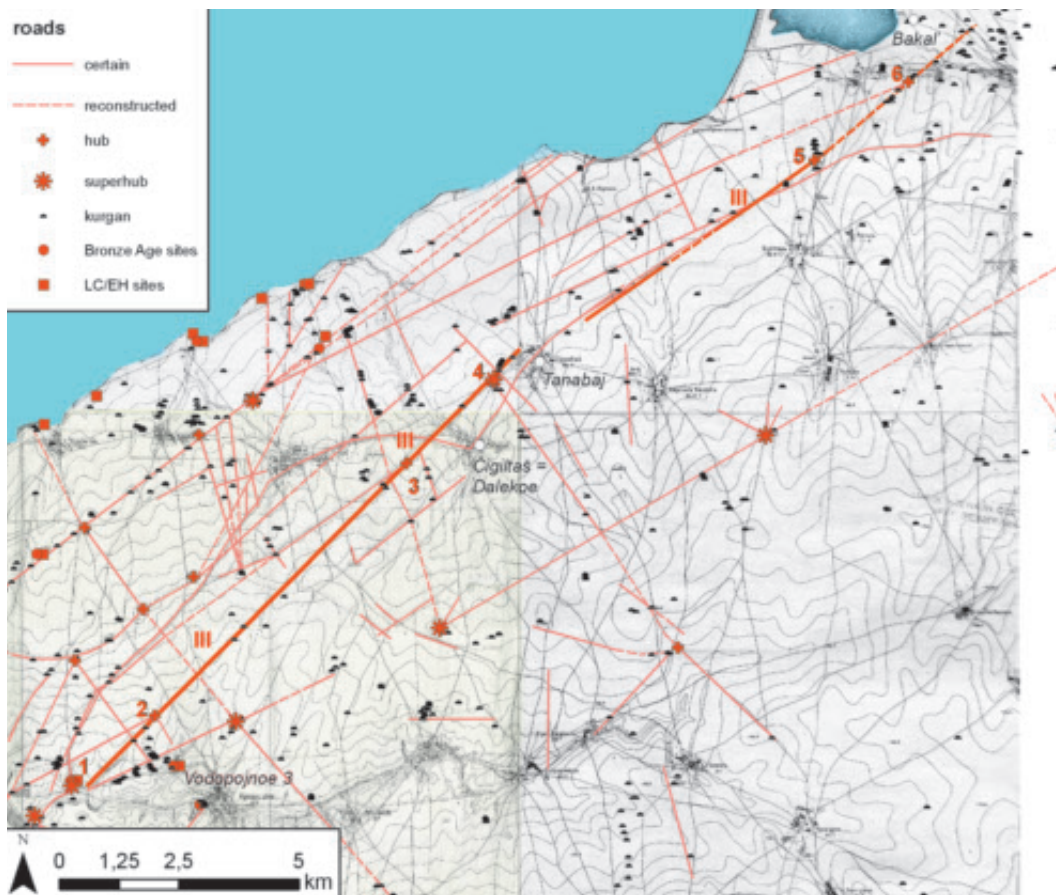


Fig. 6.26 • Road III.

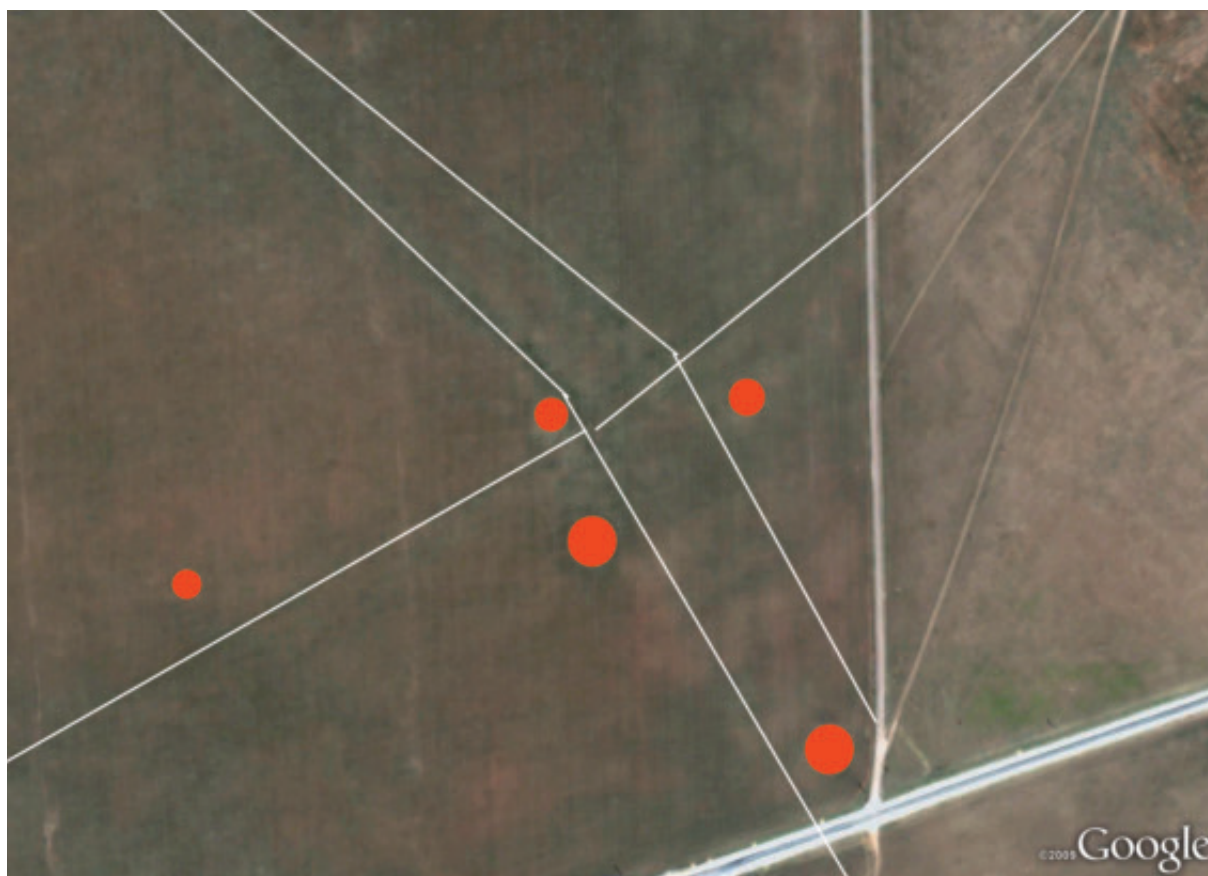


Fig. 6.27 • Superhub III.4 (Google Earth).

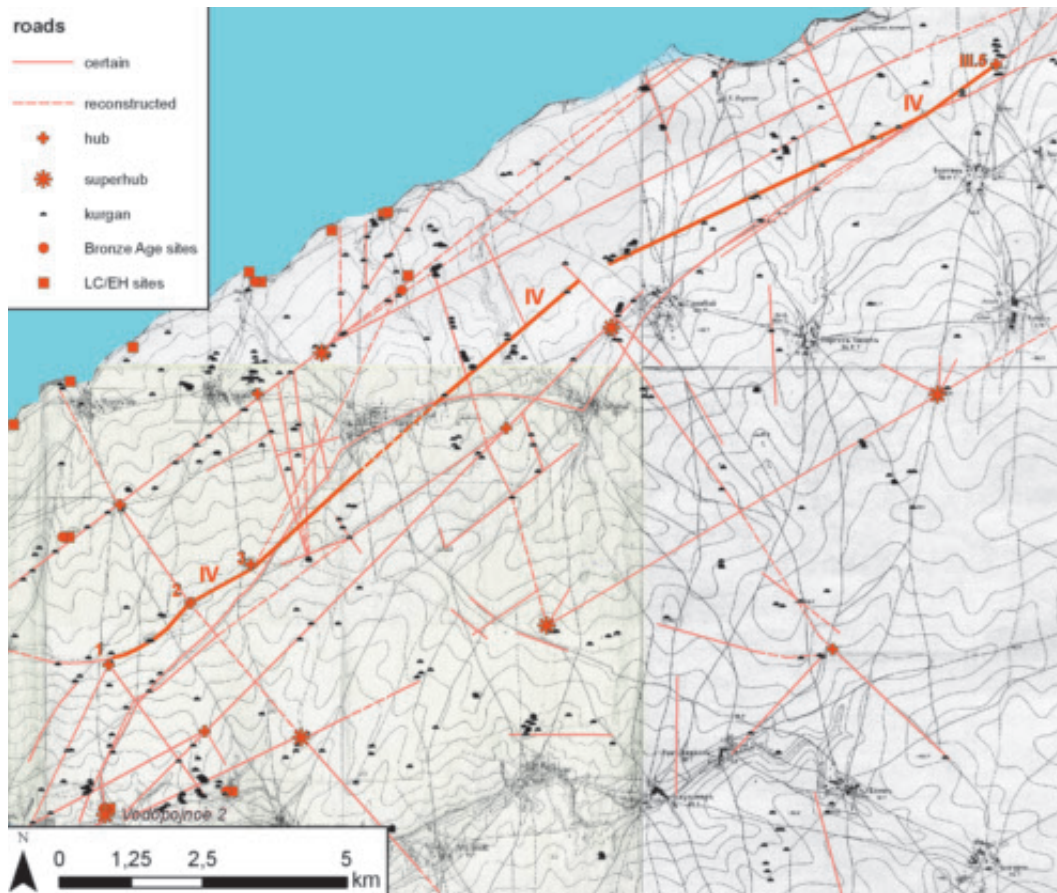


Fig. 6.28 • Road IV.

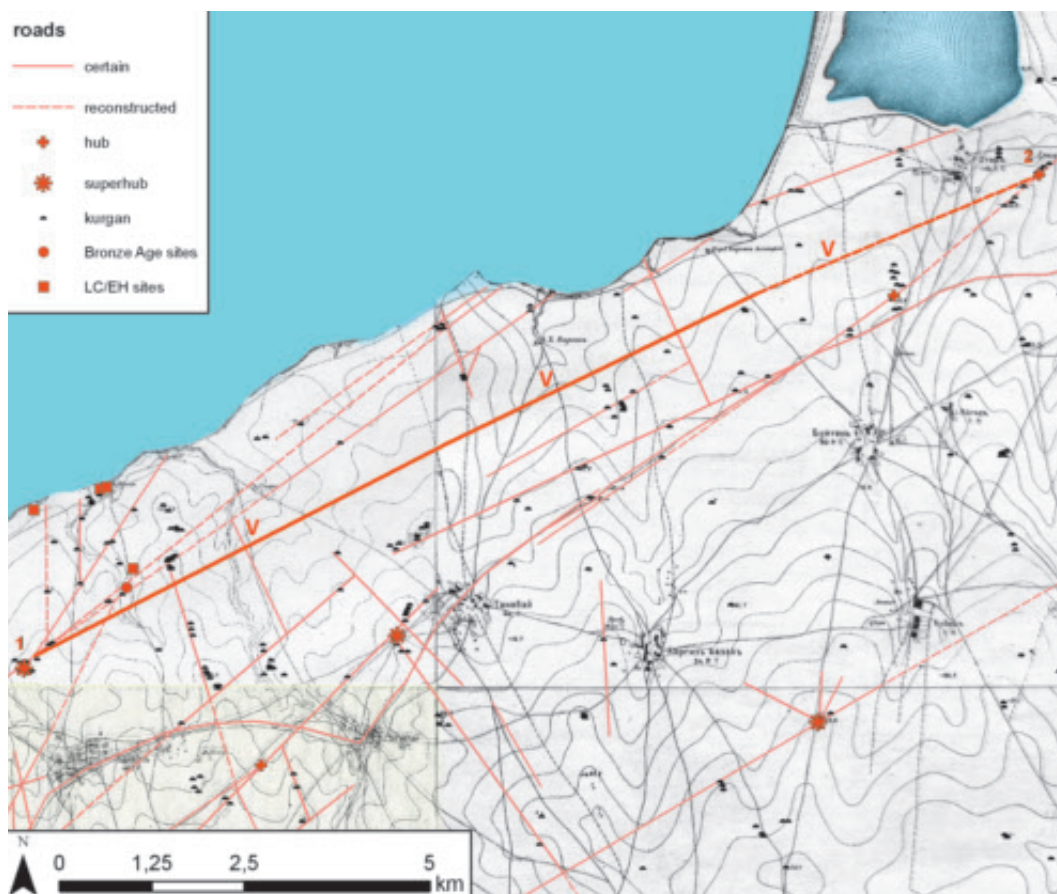


Fig. 6.29 • Road V.

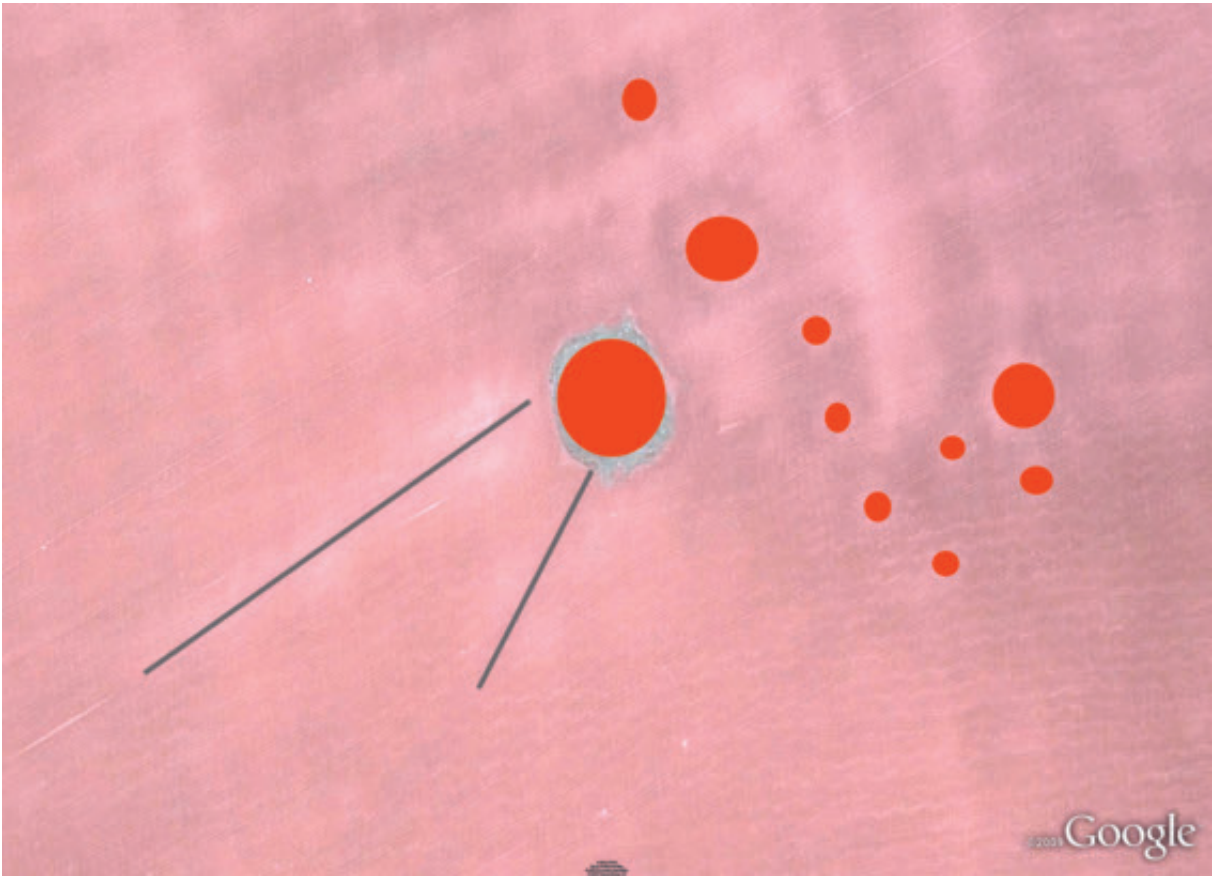


Fig. 6.30 • Hub V.1/VI.3 (Google Earth).

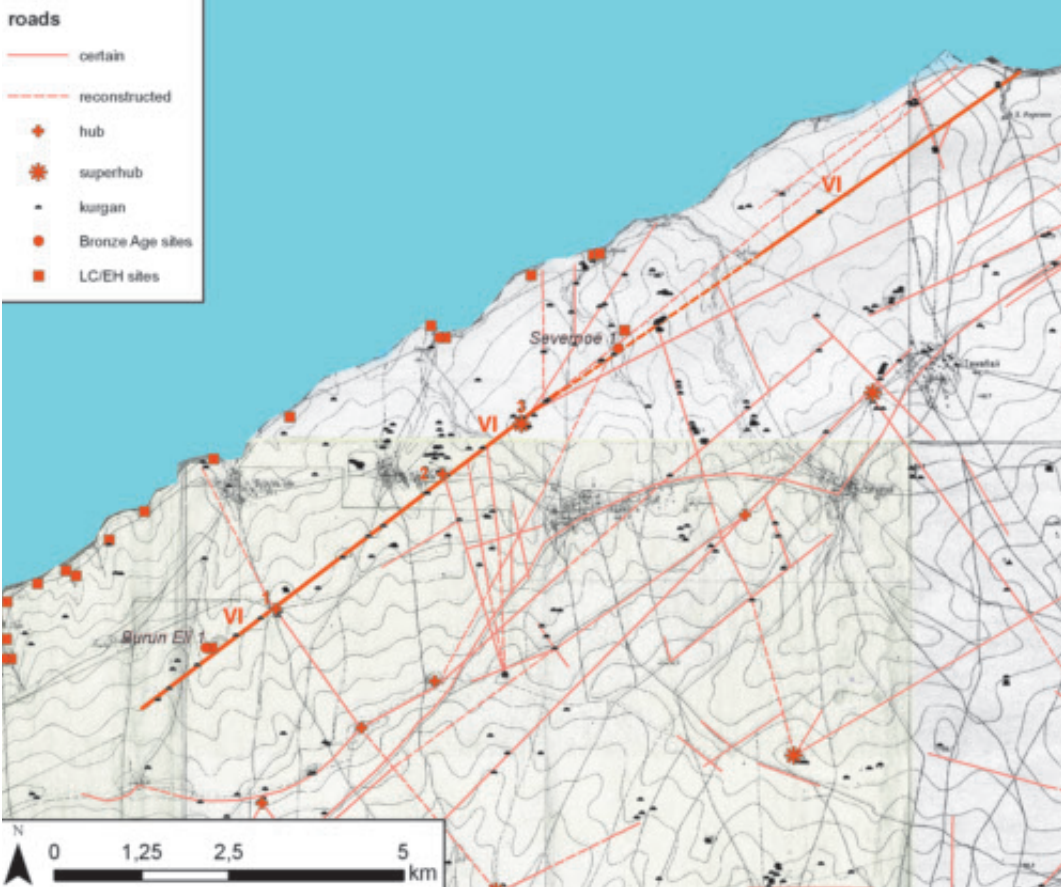


Fig. 6.31 • Road VI.



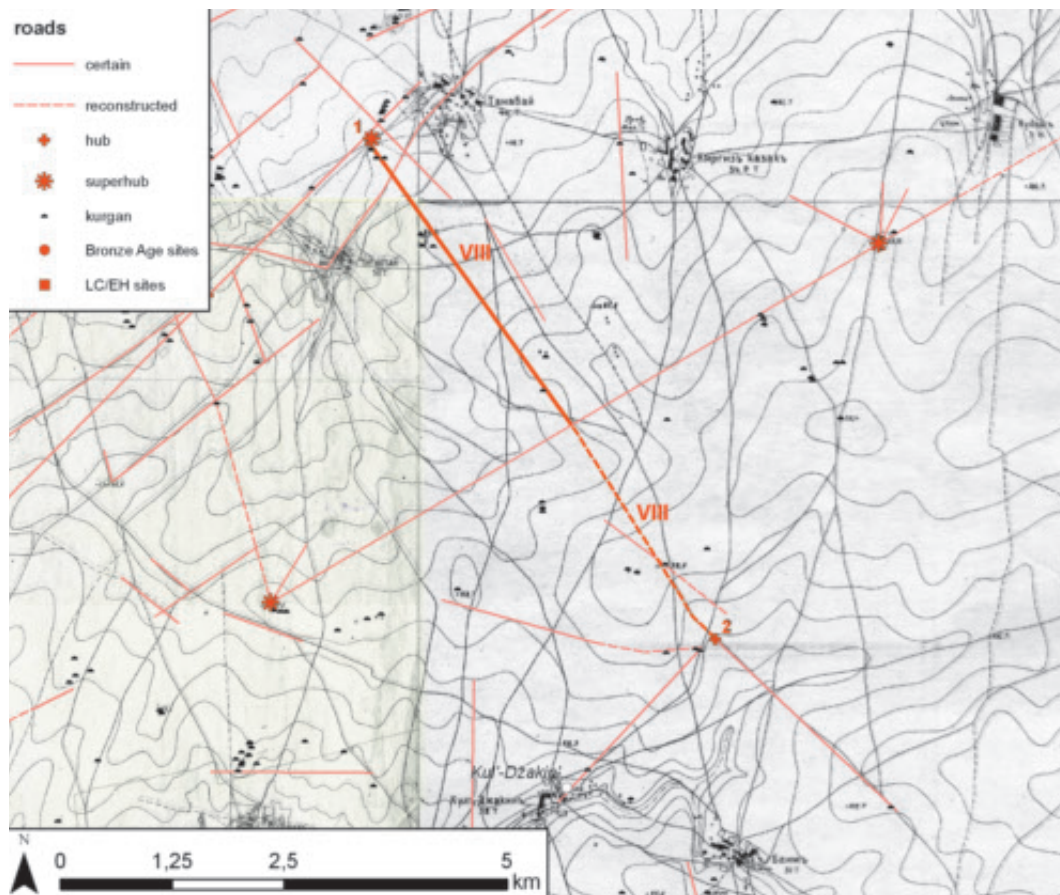


Fig. 6.32 • Road VIII.

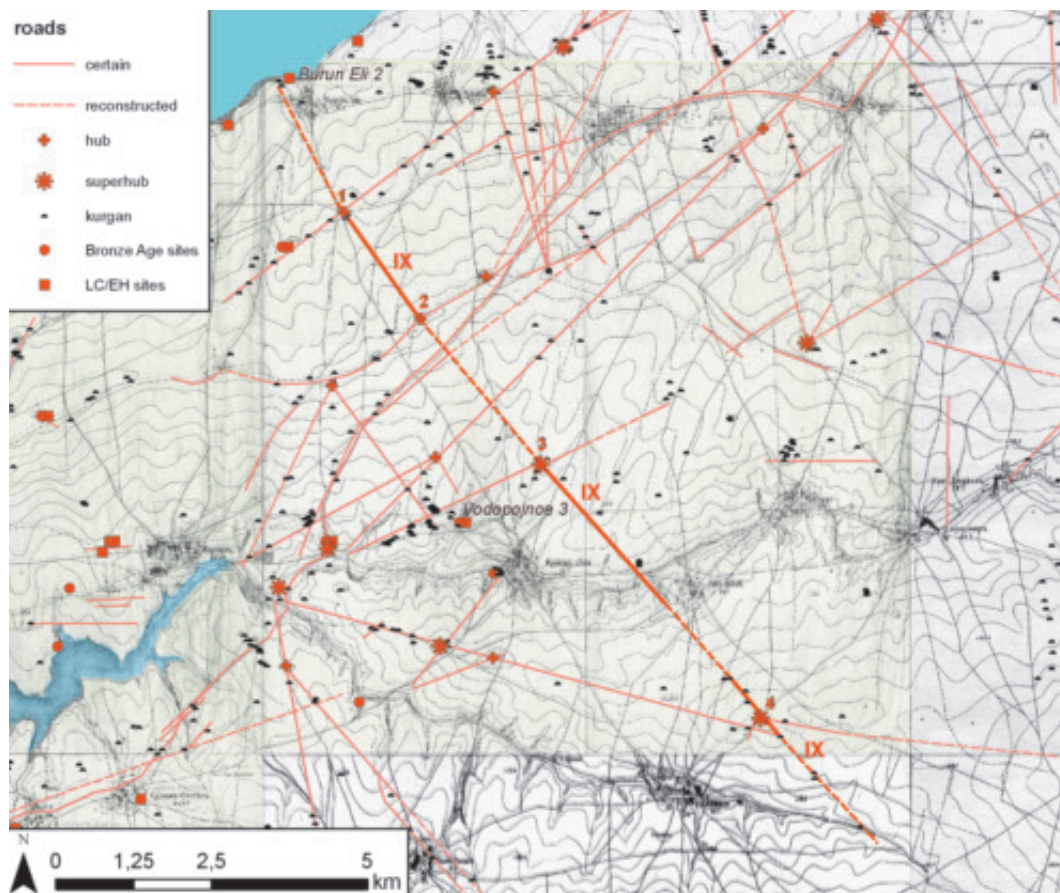


Fig. 6.33 • Road IX.

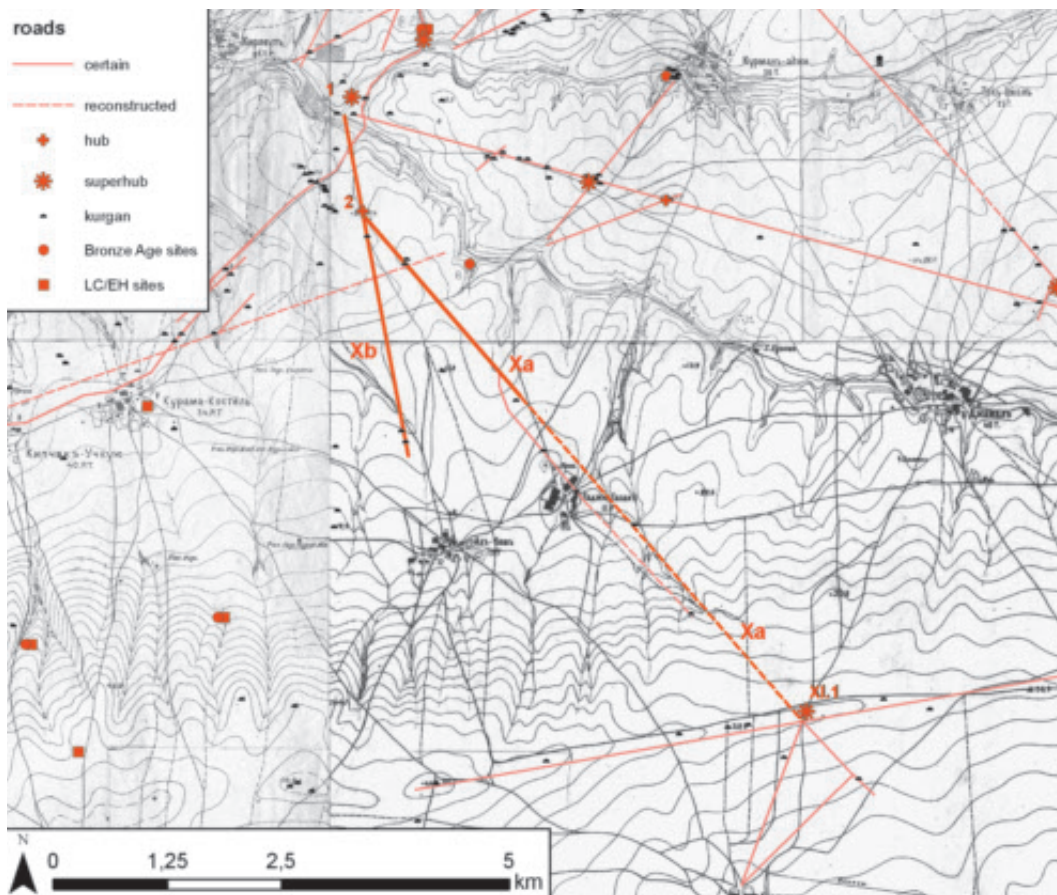


Fig. 6.34 • Road X.

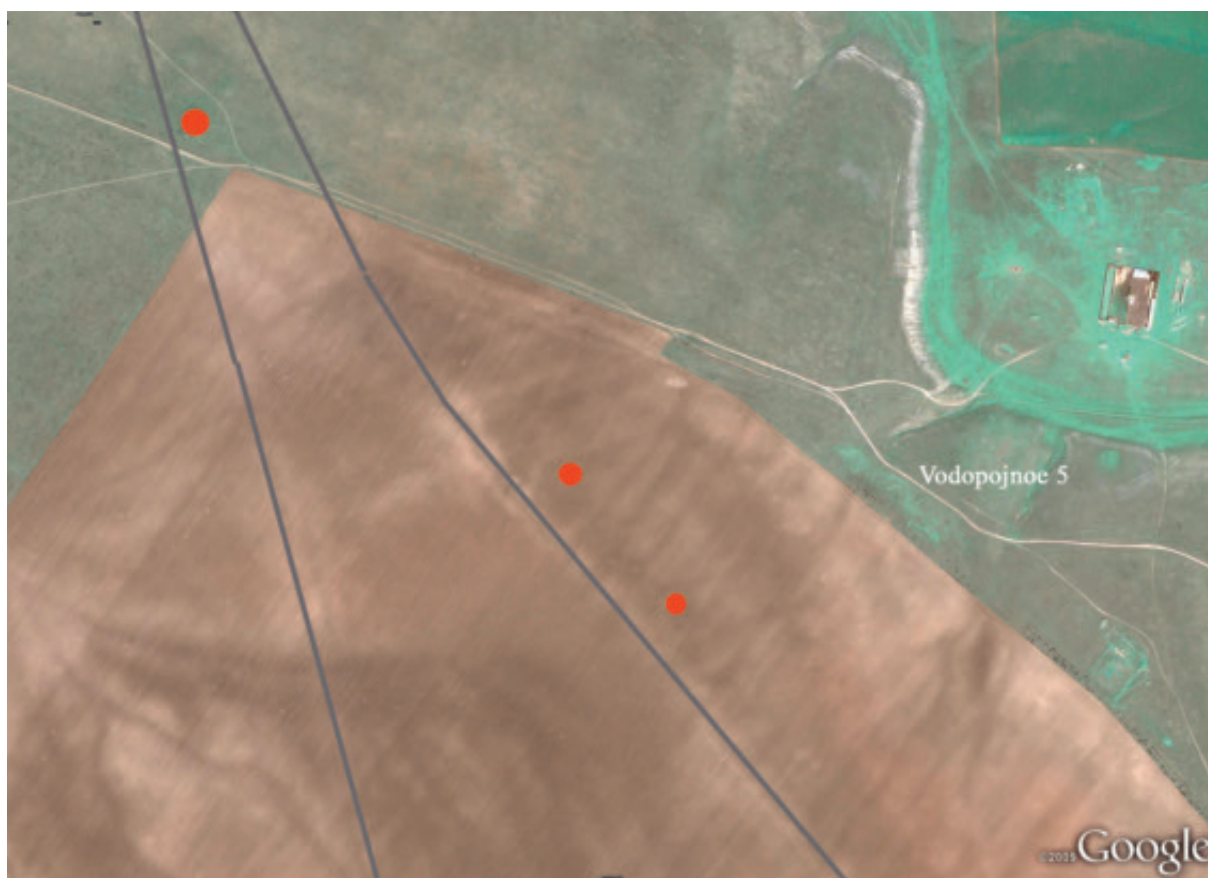


Fig. 6.35 • Road Xa and b (Google Earth).

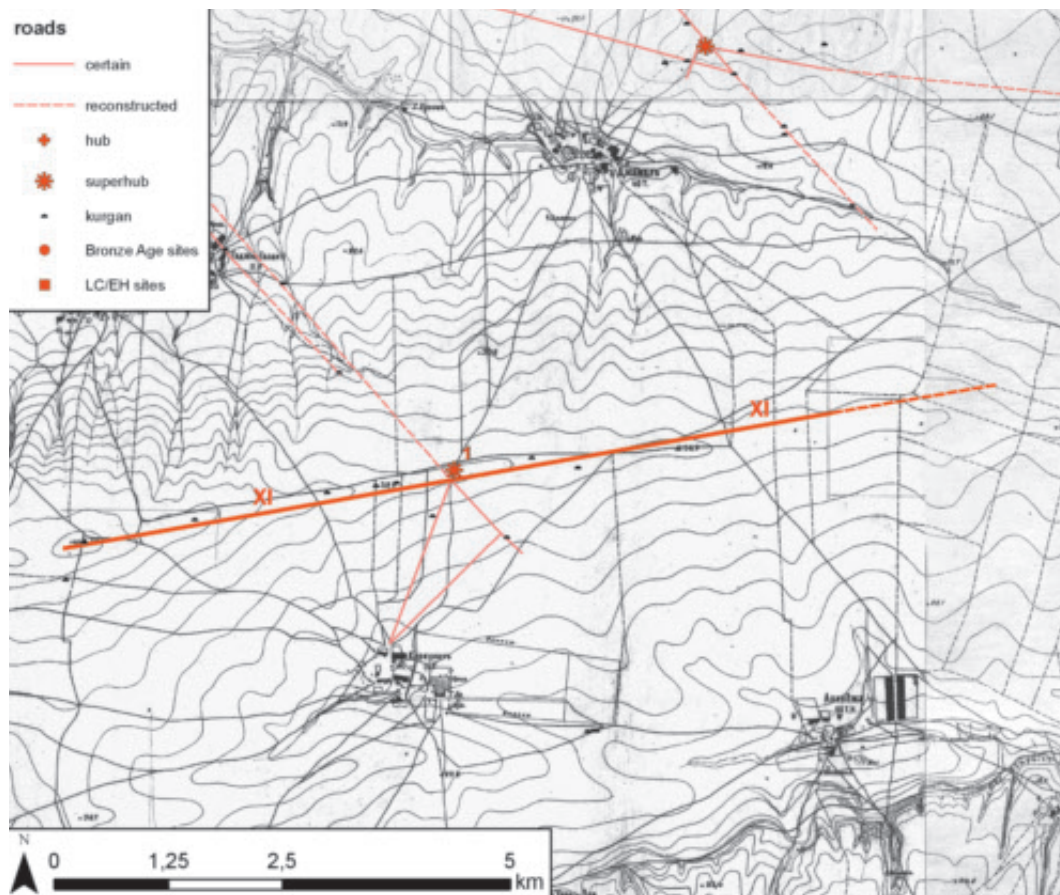


Fig. 6.36 • Road XI.

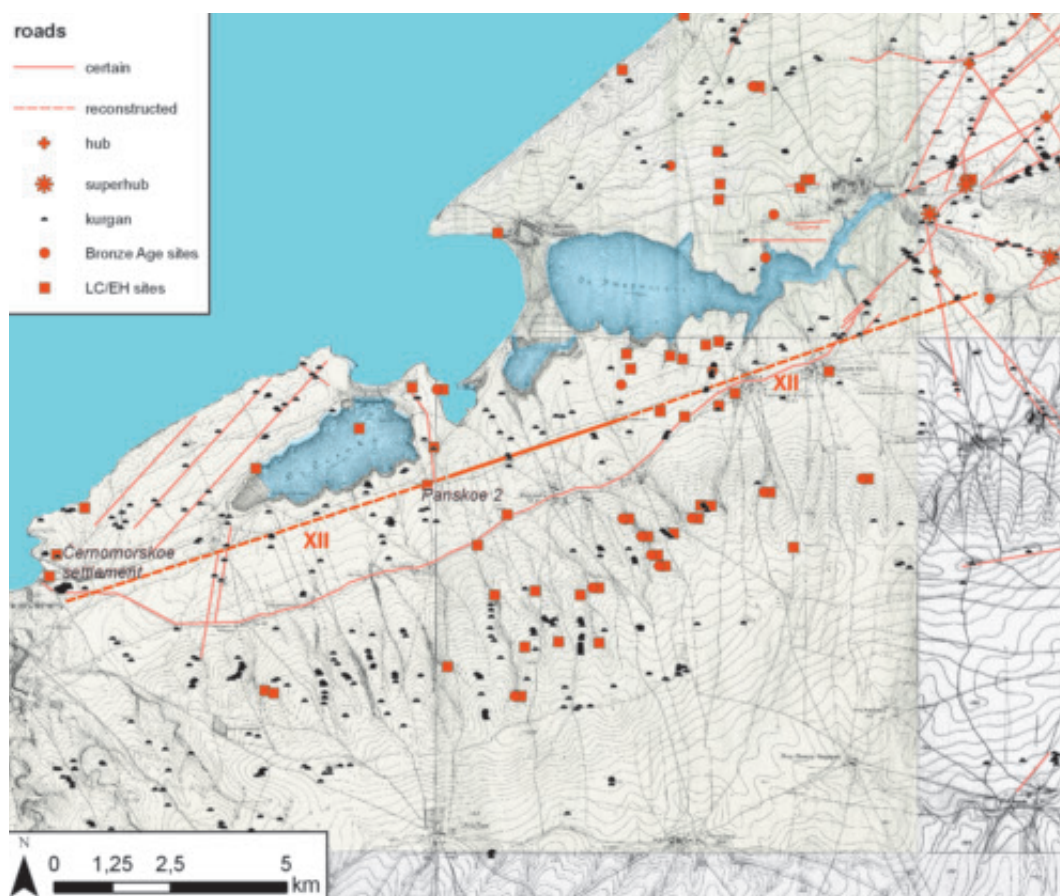


Fig. 6.37 • Road XII.



Fig. 6.38 • Road XIV.



Fig. 6.39 • Road XII and XIV (Google Earth).

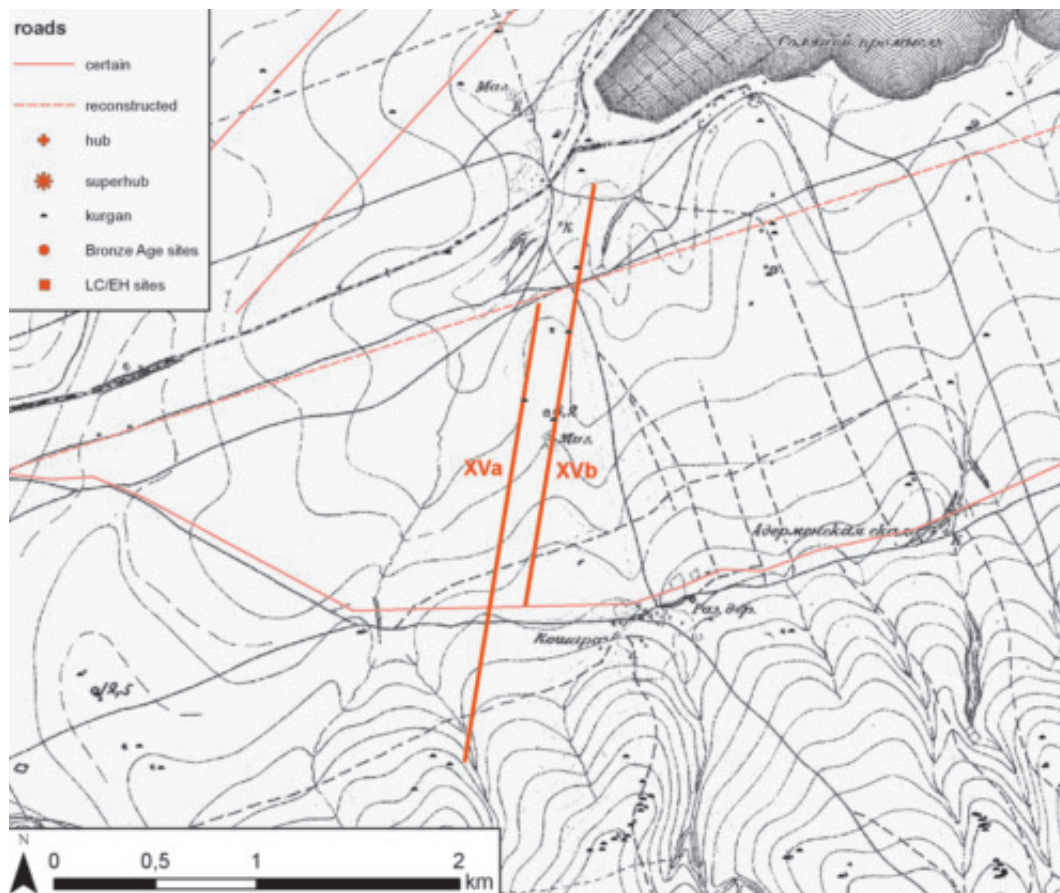


Fig. 6.40 • Road XV.

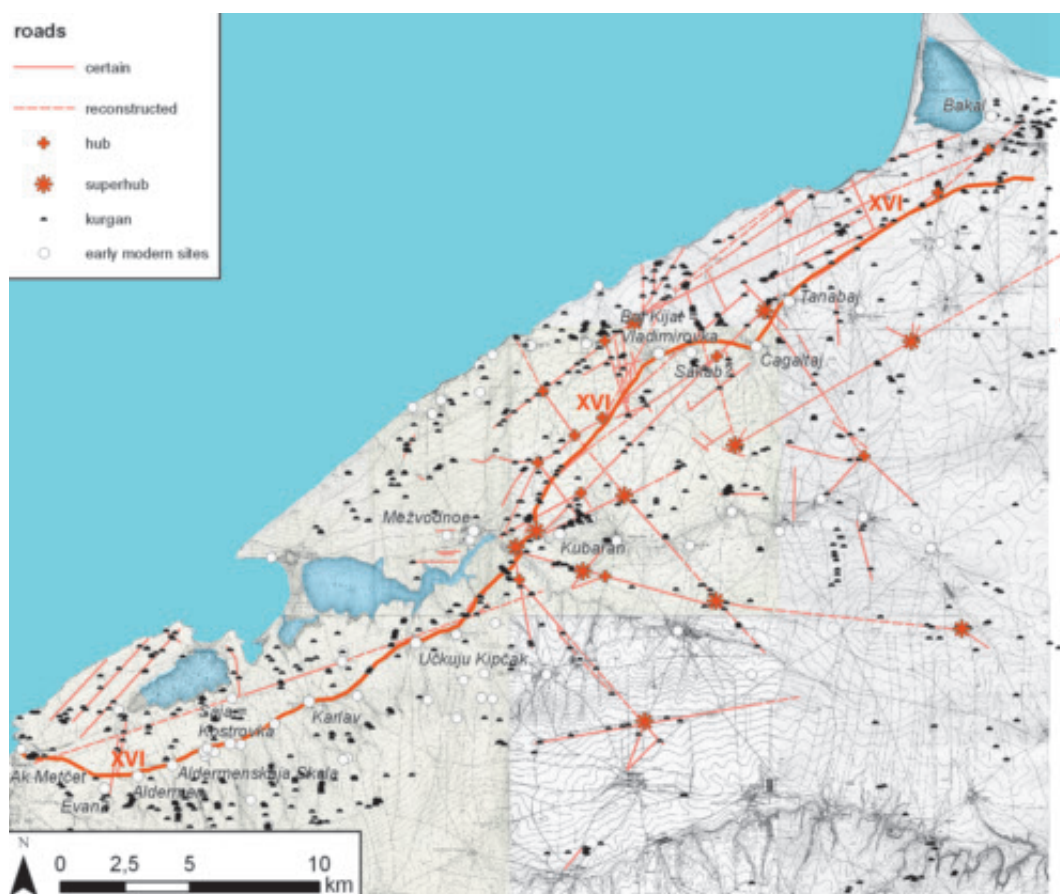


Fig. 6.41 • Road XVI.